



HUSQVARNA TF 338

An easy to handle and reliable tiller with all essential functions. Powerful and dependable Husqvarna engine with oil bath air filter for longest service-life and reverse gear to make work easier. The fully sealed transmission makes it extremely usable in wet cultures. A wheel kit is included as standard, allows you to use accessories or move the product in an efficient way. An excellent choice for customers who value efficiency and long-lasting durability.



Husqvarna gasoline engine

Powerful and reliable husqvarna gasoline engine.



Wheel kit

The wheel kit allows you to use accessories or move the product in an efficient way.

Protective bumper

The bumper will protect the engine in use or during transportation. It can also serve as lifting handle.



Adjustable handlebar

Adjustable handlebar for best working position.



FEATURES

- The bumper will protect the engine in use or during transportation. It can also serve as lifting handle.
- The wheel kit allows you to use accessories or move the product in an efficient way.
- Powerful and reliable husqvarna gasoline engine.
- Adjustable handlebar for best working position.

Technical Specifications	
CAPACITY	
Net power at preset rpm	3100 rpm
Net power at preset rpm Energy	3.6 kW
Power output	3.6 kW
Rotational speed (min/max) max	97 rpm
Rotational speed (min/max) min	53 rpm
DIMENSIONS	
Article gross weight	108000 g
Article net weight	93000 g
Tine diameter	360 mm
Weight	81 kg
Working depth	30 cm
Working width	95 cm
ENGINE	
Cylinder displacement	212 cm ³
Engine brand	Husqvarna
Engine name	Husqvarna Engine
Fuel tank volume	4.8 l
Fuel tank volume	1.27 gal (US)
Motor/engine manufacturer	Weima
Transmission steps forward	2
Transmission steps reverse	1
Transmission type	Chain/Manual
Transport wheel/s	Not available
EQUIPMENT	
Chevron tyres	No
Cultivator type	Front-tine
Drag bar	Yes
Foldable handlebar	Yes
Handlebar-mounted gear selection	No
Horizontally adjustable handlebar	No
Plant guards	No
Reverse gearbox	Yes
Rubber wheels	Included
Transport wheel/s	Not available
Vertically adjustable handlebar	Yes
LUBRICANTS	
Fuel consumption	395 g/kWh
Fuel tank volume	4.8 l
Power/fuel type	Petrol
MATERIALS	
Master pack: Paper + Cardboard	0 g
Metal total	0 g
Paper + Cardboard total	0 g
PE total	0 g
PET total	0 g
Plastic foil	0 g
Plastic rigid	0 g
Plastic total	0 g
PS/EPS/HIPS total	0 g
PACKAGING	
Packaging height	860 mm
Packaging length	860 mm
Packaging volume	362.40 dm ³
Packaging width	490 mm
Quantity in Master pack	1
SOUND AND NOISE	
Sound power level, guaranteed (LWA)	98 dB(A)
Sound power level, measured	96 dB(A)
Sound pressure level at operators ear	76 dB(A)

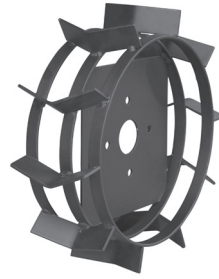
ACCESSORIES



HUSQVARNA CONNECTING
BRACKET B-TYPE
588 26 60-01



HUSQVARNA POTATOES
HARVESTING PLOUGH
588 26 63-01



HUSQVARNA METAL WHEEL KIT -
EMM
588 26 71-01



HUSQVARNA DEEP HOE KIT
588 26 72-01